

School Community Charter

 **Collaborative. Respectful. Communication.**

The following School Community Charter outlines the responsibilities of parents, carers, educators and school staff in NSW public schools to ensure our learning environments are collaborative, supportive and cohesive.

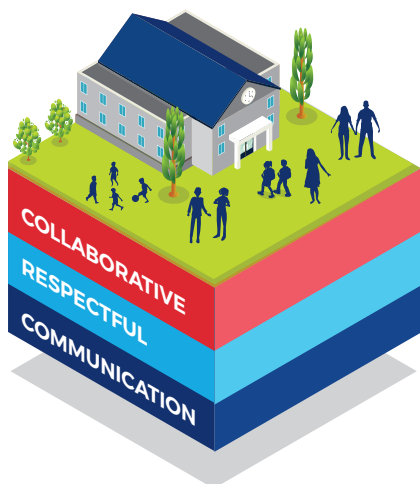
We treat
each other
with
respect

What our schools provide

NSW public schools work to create positive environments for students, staff and the entire school community that support student learning. We strive to ensure that every student is known, valued and cared for.

The best education happens when parents and schools work together.

The School Community Charter aligns with the NSW Department of Education Strategic Plan 2018 – 2022.



Positive environments

It is important that our NSW public schools are positive environments and that parents and carers are kept informed of students' progress and school announcements.

Parents and carers can expect:

- to be welcomed into our schools to work in partnership to promote student learning.
- communication from school staff will be timely, polite and informative.
- professional relationships with school staff are based on transparency, honesty and mutual respect.
- to be treated fairly. Tolerance and understanding are promoted as we respect diversity.

We
prioritise
the wellbeing
of all students
and staff

**Unsafe
behaviour**
is not acceptable
in our schools

We work
together
with the
school

Ensuring respectful learning environments for all members of NSW Public Schools communities.



We create **collaborative** learning environments

We all play **a part**

We work **in partnership** to promote student learning

Communicating with our schools

Our staff will find a time to talk to you when they can give you their full attention. Please remember that while our staff are in class or dealing with other matters, they may not be available to answer your questions immediately.

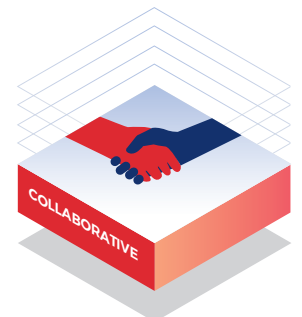
Our schools and communities will make sure that written communication is appropriate, fair and easy to read. We encourage you to use email and social media appropriately to connect with your school and stay up-to-date with up-coming events in the school community.

Our guide for parents, carers and students provides useful information about the complaints process: education.nsw.gov.au/about-us/rights-and-accountability/complaints-compliments-and-suggestions/guide-for-parents-carers-and-students

Respectful communication is a right

In all workplaces people have the right to feel respected. Unacceptable and offensive behaviour has no place in our school communities.

To ensure the wellbeing of students, staff and the community in our schools, steps will be taken to address unacceptable behaviour. This may include restricting contact with the school community or, in more serious cases, referral to NSW Police.



Unacceptable behaviour may include but is not limited to:

- Aggressive or intimidating actions, such as violence, threatening gestures or physical proximity.
- Aggressive or intimidating language, including the use of obscenities, making sexist, racist or derogatory comments or using a rude tone.
- Treating members of the school community differently due to aspects such as their religion or disability.
- Inappropriate and time wasting communication.



Collaborative.
Respectful.
Communication.

School Community Charter

education.nsw.gov.au