

The Wheeler Word

Phone: 9971 8352 Fax: 9982 5617
Email: wheelerhts-p.school@det.nsw.edu.au
Website: <https://wheelerhts-p.schools.nsw.gov.au>

Term 2 Wk 5

Thurs 30 May 2019

Acknowledgement of Country

We would like to pay our respects to the Gai-maraigal and Garigal people who looked after and cared for the land our school sits upon for thousands of years. We would like to acknowledge the traditional custodians, past, present and future. We need to appreciate the Aboriginal people for looking after this land. Their memories and connections will always be respected and remembered. By Chloe B - Prefect

Good luck to our **Special Dance** groups who are performing in an eisteddfod at Abbotsleigh on Sunday. Last week both groups performed at Pittwater House with the Juniors being awarded 1st place! Congratulations to both groups and special thanks to dance teacher extraordinaire Tahlia, Mrs Alexander, Miss Wilson and the many parents for supporting the dancers last Saturday.

Semester One School Reports

This year, student reports will be emailed to parents rather than hard copies sent home. If you have changed your email address please ensure the updated address has been provided to the school as soon as possible. We expect that reports will be issued in the last week of this term.

Parent Information Evening - Helping your child with reading at home

For parents with emergent readers in Kindergarten or Year 1, this is a hands-on workshop with activities, prompts and suggestions designed to help you help your child make progress in their reading.

Mrs Kathy Westwood, one of our Learning and Support teachers, will be presenting this workshop. Kathy is a trained Reading Recovery teacher and currently runs individual and small group literacy programs for students in Stage 1 at WHPS.

The workshop will include:

- activities to learn sounds and sight words
- how to introduce an unseen book to your child
- giving explicit and helpful prompts and praise
- leading discussions and questions to aid comprehension
- how to encourage fluency
- a focus on making reading a positive, enjoyable experience



Date: Wednesday 5 June
Time: 6:30 to 7:30pm
Location: WHPS library

Numbers are limited. Please RSVP to WHPS office by Friday 31 May.

After School Playground Use

Please be reminded that after the 3.15pm "home time" bell, no formal student supervision is provided either in classrooms or the playground. Students are asked to safely make their way home after the bell. Parents on site after 3.15pm are reminded of their Duty of Care and asked to watch their children to prevent any unforeseen accidents. Your attention to these requests is greatly appreciated.

David Scotter
Principal

FROM THE OFFICE

Stewart House School Clothing Appeal

Bags for the clothing appeal will be distributed to students this week. Please place bags in the front office, last day for collection is Friday 14 June.

Thank you

Jodie Sly
School Administration Manager



2019 DATES

TERM 2

Fri 31 May PSSA Rd 4
Chess (Away)

Sun 2 June Dance @ Abbotsleigh

Mon 3 June AFL Knockout

Wed 5 June District Cross Country
Parent Reading talk 6.30pm

Thurs 6 June PSSA & Special
Group Photos

Fri 7 June PSSA Rd 5
Chess (Home)

Mon 10 June Public Holiday

Tues 11 June Yoga Open Day -
parents welcome to visit

Wed & Thurs 12&13 June Yrs 1&2
Excursion - Vaucluse House

Fri 14 June PSSA Rd 6
Chess (Away)

Mon 17 June 7pm P&C Meeting

Tues 18 June Snr Choir rehearsal
@ Chatswood

Wed 19 June Maths Olympiad No. 2

Thurs 20 June
K-2 Maths Incursion
Yrs 3&4 Excursion - The Rocks
PCS NAIDOC Art Exhibition @
Warriewood Square

Fri 21 June Syd Nth Cross Country
Chess (Home)

Mon 24 June Dance @ Glen St-
Dress Rehearsal (AM) & 7.30pm

Wed 26 June School Tour 9.45am
Dance @ Glen St 5pm

Fri 28 June NO PSSA- BYE
Chess (Away)

Mon 1 Jul-Wed 3 Jul Yr 5 Camp

Wed 3 Jul-Fri 5 Jul Yr 6 Camp

Thurs 4 July Yr 3 & 4 Drama
performances

Fri 5 Jul NO PSSA or Chess
Last day of Term 2

TERM 3

Tues 23 July - Fri 27 Sept
Mon 5 Aug PCS Music Festival @
Pittwater HS

Tues 6 Aug Yr 3-6 Athletics
Carnival @ Narrabeen

Thurs 15 Aug Colour Run
Friday 30 Aug Father's Day
breakfast

Mon 2 Sept Pittwater Athletics
Carnival

Fri 27 Sept Last day of Term 3

TERM 4

Mon 14 Oct - Wed 18 Dec

Mrs Wright's Wrap Up

RECONCILIATION WEEK AND AMAZING ABORIGINAL ARTWORKS



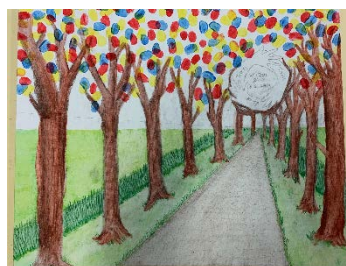
National Reconciliation Week (NRW) is a time for all Australians to learn about our shared histories, cultures and achievements, and to explore how each of us can contribute to achieving reconciliation in Australia.

The dates for NRW remain the same each year; 27 May to 3 June. These dates commemorate two significant milestones in the reconciliation journey - the successful 1967 referendum, and the High Court Mabo decision respectively.

Reconciliation must live in the hearts, minds and actions of all Australians as we move forward, creating a nation strengthened by respectful relationships between the wider Australian community, and Aboriginal and Torres Strait Islander peoples.

(Information from Reconciliation Australia website - <https://www.reconciliation.org.au/national-reconciliation-week/>)

Many of our students have been busily completing artworks ready to submit for possible selection in the PCS Aboriginal Education Committee art exhibition to be held at Warriewood Square from 20 June (see information on next page of Newsletter). Every year, the standard of artworks improves and the thoughts and meaning behind the pieces is impressive to say the least. It is becoming increasingly difficult to choose which pieces will make it to the exhibition. Over coming weeks, I will include the successful pieces in the newsletter and we hope to see many people from our Wheeler Heights community at the Opening Ceremony of the exhibition.



SPORT AND GROUP PHOTOS – THURSDAY 6 JUNE

It's not long until the next lot of photos are taken! This time it is the sport and group photos, which will be taken on **Thursday 6 June**.

*****UNIFORM CHANGE ON THIS DAY*****

All students K to Year 6 are to wear sports uniform on this day.

The Year 6 photo will be the first photo of the day. They will need to wear their Year 6 shirt for the photo but bring their sports uniform to get changed into after the photo. We ask that **all Year 6 students be at school by 8:50am**, ready for the photo at 9:00am.

All students will be wearing only their **sport uniform for all photos** so there is no need to bring dance uniforms or instruments.

Information regarding how to order the photos will be given at a later date. Keep perfecting those smiles.

Mrs Priscilla Wright
Assistant Principal
Instructional Leader





**PENINSULA COMMUNITY
OF SCHOOLS**



Artwork by 2018 Kindergarten-Year 1 students, supported by Year 6 students, Cromer Public School

“VOICE TREATY TRUTH” Art Exhibition

Peninsula Community of Schools invites you to attend our exhibition in celebration of *Aboriginal and Torres Strait Islander Cultures* on the Northern Beaches.

Enjoy a showcase of artworks by students from Kindergarten to Year 12 attending our 15 Peninsula Community of Schools.

The collection has been created by considering the 2019 themes for; NAIDOC Week and Gai-mariagal Festival - “Voice Treaty Truth- Let’s work together for a shared future”

*Harmony Day - “Everybody Belongs”
and Reconciliation Week - “Grounded in Truth-Walk Together with Courage”*

The artworks reflect the strength in the messages from these four significant celebrations and we welcome you to “Voice Treaty Truth” to view and talk about these stories told through the voices of our children.

Where: Warriewood Square Jacksons Road Warriewood

Date: Thursday 20th June 2019

Time: 5:00pm – 7:00pm (Official Welcome at 5:30pm)



Proudly supported by Warriewood Square

CRITICAL AND CREATIVE THINKING (CCT) UPDATE

The development of critical and creative thinking skills requires knowledge and practise. As a result, students are participating in a whole school CCT program. Each week we will include information about the focus disposition. We will also explain a new crunch every week.

Week 6: Focus Disposition: Flexible

What is a flexible disposition?

Being flexible means you are able to look at problems from multiple perspectives and can change your plan when new problems arise.



To support their learning try to find opportunities to reinforce this trait in your child at home.

Ask your child: *How they have been flexible this week?* Have they been flexible and looked at a problem from different perspectives?

(Example: If they had a problem with a friend did they look at the situation from their friend's perspective)

Have they demonstrated that they can change their plan if it's not working?

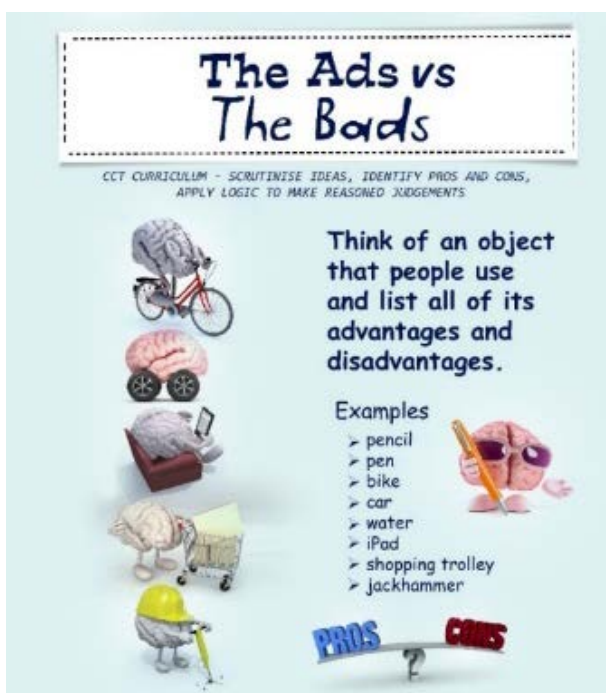
(Example: They were going to build or make something but it wasn't working so they thought of a new way to do what they wanted to do)

Have a Try at Home

Each week we are going to include information about a CCT crunch (designed by Minds Wide Open). You may wish to use these CCT crunches as a fun activity to do while enjoying dinner.

CCT Crunch of the Week – The Ads Vs the Bads

The Ads vs the Bads involves thinking of an object that people use and listing all the advantages and disadvantages of the object.



If you have any questions please feel free to ask a member of the CCT Team: Miss Higgs, Miss Earl, Mrs Young, Mr Jones, Mrs Sullivan and Miss Tekampe.

Miss Earl for the CCT Team

YOGA & WELLBEING FAMILY DAY

A note from our Yoga teachers:

'We would be delighted if you would join us in

Week 6 – Tuesday 4 June for our Life Skills Group Family Class Viewings

In this Life Skills Group Family Class Viewings, parents, carers and children participate in games and relaxation activities that you can then take home and use on a regular basis.

We provide fun, 'bite-sized' exercises that you can try at home to help each family member unwind and connect with each other.'

Please see the timetable of class times for parents/grandparents to join. If you wish to join your child's class, there is no need to RSVP, just come along to our school hall during the times listed.

Tuesday 4 June	
9.15 – 9.55	KT
9.55 10.35	KS
10.35 11.15	KH
11.40- 12.20	1G
12.20-1:00	1E
1:50 – 2:35	1R
2:35-3:15	1M

Namaste

Miss Rachael Tekampe

Yoga Coordinator



SRC NEWS



Woolworths Earn and Learn Donation

Our school has participated in a number of events to support farmers impacted by the drought. To help children also affected, the SRC has decided to donate our Woolworths Earn and Learn stickers to Trundle Central School. This school has 126 students across Kindergarten to Year 12. Trundle is in the central west region of NSW.

Whilst water restrictions for us will start this weekend, families in the country have been suffering due to drought for many years. Rather than just donating our stickers, this is a valuable opportunity to connect with a country school, so our SRC students will also write letters to classes at Trundle. This communication between our schools will be an opportunity to gain new perspectives and build connections. It is also a chance for our students to learn about the different and positive experiences children living in a country town enjoy.

Trundle is a resilient community that is working together to overcome the challenges of the drought. The principal of Trundle Central School has previously spoken about how students, at times, have needed to wash in buckets because it costs around \$700 to get a load of water to some properties. To support the community, the school has upgraded its showers and provided washing machines making them available for use by the community. I'm sure, like me, most of us rarely appreciate being able to enjoy a hot shower at whim so hearing how water shortages impact others should encourage all of us to be more water wise.

Miss Earl

SRC Coordinator

CHESS

The WHPS Rookies Chess team is currently competing in the NSW Junior Chess League Inter School tournament on Friday afternoons.

The team is made up of Edu B, Josh S, Callum H and Leo R with Daniel Z as reserve.

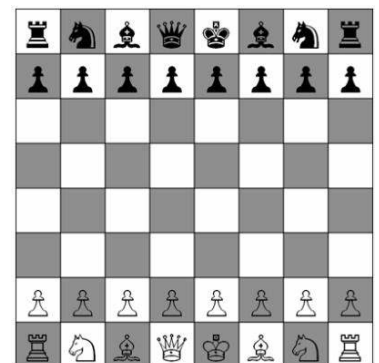
After winning Round 1 against St John's Narraweena and Round 2 against Seaforth Public School, we lost to Belrose Public School last Friday.

Thank you to Mrs Ramdeen and Mrs Briones for the yummy afternoon teas and to Mrs Hill for transporting the boys to their Seaforth match.

This week we play St Augustine's College and hope to regain our winning streak.

Mrs Sullivan

Chess Co-ordinator





WHEELER HEIGHTS DANCE PROGRAM

Last Saturday, 25 May, our Junior and Senior dance groups participated in the "I'd Rather Be Dancing" competition at Pittwater House. These two groups performed against a number of other schools and did our school extremely proud with superb performances. The Junior group did particularly well and received first place! Congratulations to the Junior dance group and Miss Tahlia for an outstanding outcome! We wish to thank our wonderful dance parents, Jenni and Shelley, for the countless hours and commitment they have shown our groups.

Both our groups have another eisteddfod this weekend. Please arrive by your designated time with full hair, makeup and costumes.

'Extreme' is on Sunday 2 June at Abbotsleigh School.

Seniors arrive 8:00am, Juniors arrive 9:40am.

Juniors: low sleek ponytail, red lipstick, black socks, 4 bobby pins, costumes and black jazz shoes

Seniors: high and sleek bun, costumes, no jazz shoes needed



The Sydney North Dance Festival dates at Glen Street have been announced.

On Monday 24 June, both groups will attend a dress rehearsal during school time and will perform in the 7:30pm evening performance.

On Wednesday 26 June they will perform in the 5:00pm evening show. A note is being sent home this week with more information.

If you are away for any period of time please advise us now as stage positioning is extremely important. It is also very important, as performances are approaching, that children attend all classes. For absences please email the school or the dance committee - whps.dance@gmail.com



Miss Higgs and Mrs Alexander
Dance teachers

STATE FINAL OF SHAKESPEARE DRAMA CARNIVAL

It was my pleasure to accompany the winners of WHPS First Shakespeare Carnival to the state final in Lakemba, on Monday.

Taj, Josh, Tyson and James entered the ensemble category whilst Maya and Imogen entered the duologue.

The boys tackled Romeo and Juliet and the girls performed Macbeth. After our workshop last week and with sword fights choreographed, the actors were ready.



Both gave excellent performances and were awarded certificates for their efforts. Congratulations on representing WHPS at state level!

Ms Ginny Macpherson
Drama Teacher

SPORTS NEWS

AUTUMN/WINTER PSSA:

WOW, what a round of PSSA!!! It was a clean sweep for WHPS!!! Congratulations to all our teams who played exceptionally well last week, displaying many skills and sportsmanship.

SCHOOLS: WHPS V NARRABEEN LAKES P.S. Week 4 Term 2		
SPORT	SCORE	WIN/DRAW/LOSS
Jnr Girls Football	4-0	WIN
Snr Girls Football	8-0	WIN
Jnr Boys Football	1-0	WIN
Snr Boys Football	3-0	WIN
Jnr Rugby League	-	BYE
Snr Rugby League	-	BYE
Jnr AFL	29-9	WIN
Snr AFL	84-15	WIN
Netball Snr A	17-3	WIN
Netball Snr B	11-9	WIN
Netball Snr C	11-7	WIN
Netball Jnr A	29-0	WIN
Netball Jnr B	9-1	WIN
Netball Jnr C	4-1	WIN

Round 4: WHPS V. ELANORA HEIGHTS

NETBALL – Boondah

FOOTBALL – Boondah

RUGBY LEAGUE – Narrabeen 3

AFL – Narrabeen 6

Please ensure you have downloaded the Pittwater Team App, so you can keep up to date with information (all draws, calendars and results are posted and updated regularly).

KNOCKOUT TEAMS:

Congratulations to the Senior A netball team who played Newport last Friday at Boondah in their first knockout game. The sun shone brightly and spirits were high as the girls arrived at the courts. Unfortunately, Newport were too strong and the girls lost their game 4-22. The WHPS girls played gallantly and represented our school with pride and great sportsmanship.

I look forward to hearing about the upcoming Soccer, Basketball and AFL State Cup games, which will be played in the coming weeks.



PREMIER'S SPORTING CHALLENGE:



This year we will be including Year 6 Leaders to our Premier's Sporting Challenge program. The aim of the Year 6 PSC Student Leaders is to provide leadership opportunities for students with an interest and enthusiasm for sport and physical activity, as well as to support class teachers in promoting and managing the Challenge.

Some of the responsibilities of the Year 6 student leaders will include:

- Visiting K-2 classrooms on a weekly basis to update each class's physical activity data on the e-Wall Chart
- Promoting and publicising the PSC Challenge at Monday morning assemblies
- Running physical games and activities for the K-2 classes

Congratulations to the following students. They will be receiving special PSC badges at next Monday morning assembly:

Leo B
Alana C
Zoe D
Aleks D

Meisha E
Jess H
Ryan H
Jett K

Liam K
Beau M
Mia M
Jordan P

Kye P
Chelsea R
Ruby S
Ava S
Keilana S



The Premier's Sporting Challenge begins on Monday.

"Sports build good habits, confidence, and discipline. They make players into community leaders and teach them how to strive for a goal, handle mistakes, and cherish growth opportunities"
(Quote by: Julie Foudy).



FREE FOOTY TICKETS

Bulldogs v Dragons

Monday 10 June 2019 @ ANZ Stadium



Thanks to the Bulldogs, the NSW Premier's Sporting Challenge and Venues Live NSW, students and staff at your school have the opportunity to witness these two Sydney giants go head to head!

As your school is participating in this year's NSW Premier's School Sport Challenge, up to **four (4) FREE tickets** are available for *each* student and staff member to redeem for the match.

Tickets are limited so be sure to secure them quickly for what will be a great afternoon of rugby league.

To take up this fantastic offer, students and their parents should follow the below easy steps:

1. Simply go to the following website: <http://www.anzstadium.com.au/premiers-sporting-challenge>
2. Register their details via the form
3. Print out the vouchers and bring each voucher with them on the day to gain entry through Gate E into general admission seating at ANZ Stadium.

For additional information, please visit the ANZ Stadium website: <http://www.anzstadium.com.au/>

Please note:

- Students must have parental permission to participate in this offer.
- Each student is entitled to up to four (4) free tickets (limited to one registration per student).
- *Match ticket voucher must be printed and presented at Stadium entry gates for entry to this match.*
- *There is a limit of 8,000 tickets (redemption available to 2,000 individuals).*
- *Entry may be refused if match ticket vouchers are damaged or defaced in any way or redeemed in an unauthorised manner.*
- *If a match ticket voucher is resold or redeemed in an unauthorised manner it may be cancelled and the bearer of the ticket refused entry.*
- *Accessible seating is available within the allocated general admission seating area.*

Yours in Sport
Nadine Young
Sports Coordinator

P&C NOTICES

P&C NEWS

The next P&C meeting is Monday 17 June at 7pm in the staffroom.

All welcome.

Natalie Cook
P&C President



P&C FUNDRAISING EVENTS CALENDAR

Events	Class Helper	Dates
Colour Run	Year 5	Thursday 15 August
Father's Day Breakfast	Year 1	Friday 30 August
School Disco	Kindy	Thursday 24 October
Trivia Night	Year 2 & 4	Saturday 9 November

CANTEEN

CANTEEN ROSTER 2019	
TERM 2 2019	CLASS VOLUNTEER
WEEK 5 27/05 – 31/05	KT & 1G
WEEK 6 03/06 – 07/06	5/6T
WEEK 7 10/06 – 14/06	2W & 3B
WEEK 8 17/06 – 21/06	3S & 3/4Y
WEEK 9 24/06 – 28/06	4J & 4R
WEEK 10 01/07 – 05/07	5M & 5S
SCHOOL HOLIDAYS	RETURN 23 JULY

Please email Belinda Lind, at belinelind@live.com.au, the canteen convenor, the Friday before your class is scheduled. If you're unable to volunteer the week you've been given please sign up at signup.com or pop into the canteen to pick a time.



Wheeler Heights Weekly Canteen Winter Menu



DAILY SPECIALS

Monday

Sushi	\$3.50
Pasta Bolognese (GF pasta available and vegetarian)	\$3.50

Tuesday

Pizza Parcels	\$4.00
Honey Soy Chicken & Rice	\$4.50

Wednesday

Nacho Wrap	\$4.00
Sushi	\$3.50

Thursday

Beef Burgers	\$4.00
Butte Chicken & Rice	\$4.00

Friday

Sushi	\$3.50
Sausage Rolls	\$3.50

Please visit [flexischools](http://flexischools.com.au) for descriptions and more options at www.flexischools.com.au

Everything is homemade and made with hidden veggies when possible, see complete menu for ingredients.

For any questions email us at whpscanteen@gmail.com to volunteer please click <http://signup.com/go/NsULEeM>

Recess and Lunch Counter Items

Hard boiled organic egg	\$0.50
Freshly baked item	\$1.00
Seasonal fresh fruit	\$1.00
Garlic bread	\$1.00
Cheese melt	\$1.00
Cheese & vegemite scroll	\$1.00
Ham & cheese scroll	\$1.00
Fresh fruit cup	\$0.50
Fresh fruit cups with yoghurt	\$1.00
Chips & Salsa	\$1.00
Popcorn	\$1.00

Frozen items

Orange quarter	\$0.20
Fresh pineapple slice	\$0.50
Homemade icy poles	\$0.50
Smoozes	\$1.00
Juicies tube	\$1.50
Twisted Frozen Yoghurt	\$2.00

Beverages

Organic Milk	\$2.00
Juice Bombs	\$2.00
Nudie Juice	\$2.00

COMMUNITY NEWS

DALWOOD SPILSTEAD SERVICES

About Spilstead Services

The Dalwood Spilstead Service provides multi-disciplinary early intervention including health, education and welfare support for vulnerable children under the age of 9 years. It has evolved from the historic Dalwood Children's Home in Seaforth, Sydney, which was established in the 1930s to support families who required assistance in caring for their children, offering either short-term or long-term respite care. A day-care program was added in 1978 to specifically meet the educational and developmental needs of pre-school children. The Spilstead Model of Early Intervention followed and has been refined over the past 10 years to align its services with worldwide research and best practice. The Dalwood Spilstead Service is now internationally recognised for its documented success in assisting young children at risk.



*Making a difference that
will last a lifetime*



How is Spilstead Services achieving its goals?

Referrals to Spilstead Service multidisciplinary program are mainly from the New South Wales Family and Community Services Child Protection Service as a result of trauma, abuse or neglect.

The early intervention model for children is based on neuro-developmental research and is combined with strengths-based family counselling, parent education (parent/child interaction, child behaviour management, family relationships and linking families with other community services) and volunteer home visiting to families in greatest need to assist in providing personal support to assist families with a range of home or parenting tasks. The model provides support for families with complex issues, for children with social, emotional or developmental needs, as well as parents experiencing mental health problems, substance abuse or domestic violence. Children under 2 years of age with developmental needs are serviced by an Infant Home-based Early Education and Intervention program.

An outreach program monitors the development of children who are managing in mainstream school settings through regular consultation services via school or centre visits. It is a "one stop shop" program, assisting up to 90 families, providing a holistic approach with all services for both parents and children under one service umbrella and from the one team. A designated male family counsellor also co-ordinates specific programs and services for fathers.

How are Spilstead Services funded?

Spilstead Services is primarily a charitably-funded service and has a strong tradition of enlisting community and charitable support through philanthropic trusts, local businesses and fundraising events. Volunteers are an integral part of the Service.

Some facts:

95% of brain development occurs in the first 8 years of a child's life.

Children who experience early trauma in the home environment commonly go on to experience school failure, social difficulties and develop anti-social behaviour and often present to the criminal justice system.

Research has shown over a 41-year period that "at risk" children who had the benefit of early intervention had a 50% reduction in unemployment and police arrests compared with similar children who did not attend early intervention programs.

Cost benefit analysis indicates that for every \$1 spent in the provision of intensive early intervention, there is a \$17 saving in later costs to the community

Dalwood Spilstead Service

invites you to the

15th ANNIVERSARY OF DINE, DANCE, DONATE



Featuring
Barry Leef Band
and
Peter Northcote

**\$80 per person: TO BOOK TICKETS go to
www.trybooking.com/BBUTO**

The Dalwood Spilstead Service is internationally renowned for its unique and successful program for young children who have experienced trauma, abuse or disrupted development. All funds raised contribute directly to therapy services for these children.
Please email simone.grace@health.nsw.gov.au or call 9951 0345 if you have any queries.

**Sat 22nd June 2019
6.30pm @Balgowlah RSL**